

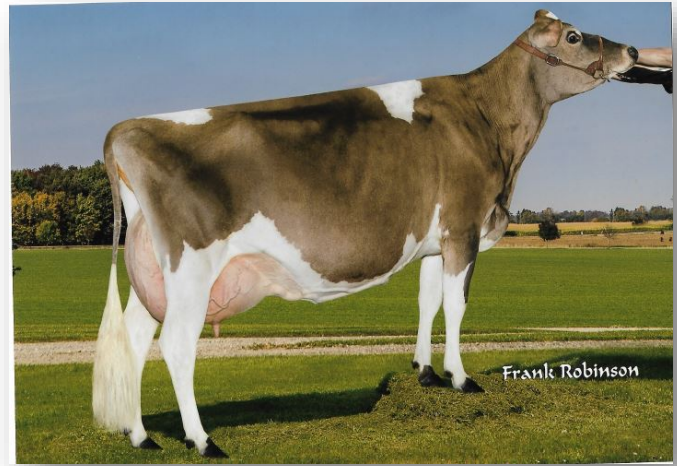
# BRI-LIN SHOESHINE TANGO

## JECANF 13377725 - PUREBRED

PA:(08/21) +40M, -3F,-0.05% +1P,+0.02% RPT.32%  
 CAN-ETA:(08/21) +7(PA) FC,27% RPT,90 RK, +1359(PA) LPI, +217 PRO\$  
 MR :97(PA), Inbr.Coeff. +5.40%, R-Value: +12%

*Fresh December 1<sup>st</sup>, 2021!*

**TATTOO:** RLJ 53H  
**BORN:** February 08, 2020  
**BREEDER:** Brian, Linda, Lucas, Jordan Raymer, Bright, ON  
**OWNER:** Brian, Linda, Lucas, Jordan Raymer, Bright, ON



*2<sup>nd</sup> Dam: BRI-LIN BOWTIE TINA ET - EX 90-2E (5-4) - 1\**

Sire :

### BRIDON SHOE SHINE

JECANM 12185860  
 GPA:(08/21) -697M, -31F,+0.09% -27P,+0.02% RPT.70%  
 CAN-ETA:(08/21) +10(PA) FC,61% RPT,97 RK, +1175(PA) GLPI, -601 PRO\$  
 MR :98(PA), Inbr.Coeff. +4.38%, R-Value: +11%  
 5 prog class 2 VG, 3 GP, GP+100%



**3<sup>rd</sup> DAM: BRI-LIN C TOPS TRIXIE ET (RLJ 12F) EX 90 (6-11)6\***  
 9 LACT: 71234M, 3667F,5.15% 2960P,4.16% (222-210-238 +2M +12F +15P)  
 12 prog class 2 EX, 8 VG, 2 GP, GP+100%  
 Silver Award, AUGUST 1999 \* Lifetime Production Award, SEPTEMBER 2007

Dam:

### BRI-LIN CASINO TOPAZ - VG 88 (3-0)

JECANF 12215955 Rump: 86, MS: 89, F&L: 88, DS: 87  
 1 11 305 6928 317 4.58 269 3.88(275 237 280)  
 2 11 266 7229 352 4.87 289 4.00(242 217 256)(Proj)  
 2 LACT: 13903M, 653F,4.70% 545P,3.92%  
 AVG. BCA:275M, 237F, 280P +41M +18F +39P  
 CAN-EBV:(08/21) +777M, +25F,-0.18% +30P,+0.02% RPT.59%  
 CAN-ETA:(08/21) +5 FC,46% RPT,77 RK, +1526 LPI, +1037 PRO\$  
 MR :96, Inbr.Coeff. +4.95%, R-Value: +13%

**3<sup>rd</sup> DAM 605185 BRI-LIN C TOPS TRIXIE ET (RLJ 12F) EX 90 (6-11)6\*, 1SA, 1LPA**

**4<sup>TH</sup> DAM 560480 STEMAR S JAY TRISHA (SMS 20Y) EX (4-7)**

**5<sup>TH</sup> DAM 511673 WILLOW DAWN TOOTS 14P (YFL 14P) SUP-EX (10-1)2\***

### TOWER VUE PRIME TEQUILA-ET

JEUSAM 114816452  
 CAN-GEV:(08/21) -971M, -22F,+0.39% -28P,+0.14% RPT.99%  
 CAN-ETA:(08/21) +13 FC,97% RPT,99 RK, +1082 GLPI, -365 PRO\$  
 MR :92, Inbr.Coeff. +2.15%, R-Value: +9%

### BRIDON IATOLA POLISH ET - EX 95-5E (9-7) - 3\*

JECANF 9851829  
 5 4 305 11545 513 4.44 399 3.46(344 282 314)SA  
 6 5 305 11768 504 4.28 431 3.66(342 271 332)SA  
 8 4 305 10077 517 5.13 364 3.61(288 278 276)SA  
 7 LACT: 72870M, 3431F,4.71% 2501P,3.43%  
 AVG. BCA:280M, 242F, 249P +26M +10F +8P  
 5 prog class 1 EX, 2 VG, 2 GP, GP+100%  
 NOM. ALL ONTARIO SENIOR 2 YR OLD  
 1ST SENIOR 2 YR OLD, ONTARIO SPRING SHOW 2012  
 3RD FOUR YEAR OLD, BRANT-NORFOLK PARISH SHOW 2014  
 2ND FOUR YEAR OLD, STRATFORD CHAMPIONSHIP SHOW 2014  
 5TH 4 YEAR OLD, ROYAL AGRICULTURAL WINTER FAIR 2014

*5 Generations of VG & EX Dams!*

### ELLIOTTS REGENCY CASINO ET

JE840M3125141657  
 CAN-GEV:(08/21) +942M, +38F,-0.13% +47P,+0.15% RPT.96%  
 CAN-ETA:(08/21) +5 FC,91% RPT,81 RK, +1883 GLPI, +1499 PRO\$  
 MR :103, Inbr.Coeff. +6.91%, R-Value: +16%

### BRI-LIN BOWTIE TINA ET - EX 90-2E (5-4) - 1\*

JECANF 11754564  
 3 1 305 7822 406 5.19 293 3.75(255 245 253)  
 4 2 305 7259 395 5.44 285 3.93(216 217 224)  
 5 3 305 8121 430 5.29 313 3.85(232 228 237)  
 4 LACT: 30699M, 1658F,5.40% 1180P,3.84%  
 AVG. BCA:235M, 235F, 237P +3M +17F +1P  
 4 prog class 2 VG, 2 GP, GP+100%